



**HBTA**

BAR TONG ADJUSTABLE.....Page 60



**HARRINGTON  
INSTOCK**

## HBTA BAR TONG ADJUSTABLE

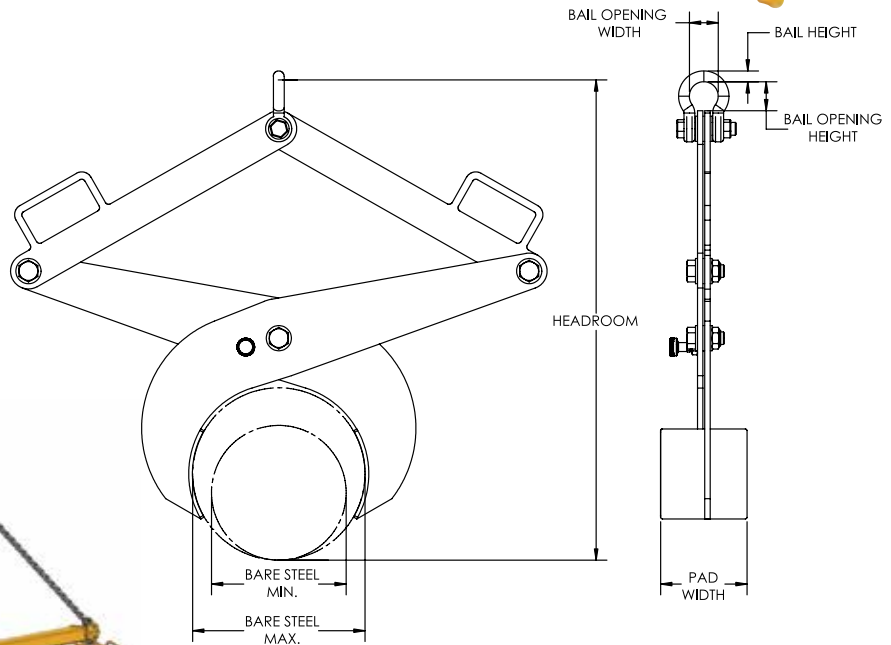
### FEATURES

- This style of adjustable diameter tong is ideal for lifting round bars, cast or steel pipe of various diameters.
- Hold open latch supplied on all 1 ton standard tongs.
- Can be supplied with optional replaceable urethane pads for additional load protection.
- The load must be balanced during the lift.
- Can be used in pairs attached to a lifting/spreader beam to handle longer loads.
- Engineered and manufactured to ASME B30.20 & BTH-1 Design Category B Service Class 2.
- 100% of ALL Harrington Lifting Beams are proof-tested to 125% capacity and certificates supplied at no additional charge.
- Made in USA.

### OPTIONS

- Replaceable urethane pads
- Hold open latch
- Higher capacities available

Products eligible for InStock display an IS icon.



Model #	Capacity (US Tons)*	Dimensions (Inches)										Weight (Lbs.)
		Bare Steel Range Min	Bare Steel Range Max	Urethane Pad Range Min	Urethane Pad Range Max	Head-room Max	Head-room Min	Pad Width	Bail Height	Bail Opening Width	Bail Opening Height	
HBTA-1/2-2.5/4	1/2	2.5	4	1.75	3.25	15	13	2.25	0.63	1.69	1.69	10
HBTA-1-4/7	1	4	7	3.25	6.25	24	21	5	0.63	1.69	1.69	25
HBTA-1-7/12	1	7	12	6.25	11.25	38	34	6	0.75	2	2	55
HBTA-1-10/15	1	10	15	9.25	14.25	35	25	6	0.75	2.25	3.25	120
HBTA-1-15/20	1	15	20	14.25	19.25	42	31	8	0.75	2.25	3.25	210

\* 1 US Ton = 2,000 Lbs



**DO NOT EXCEED CAPACITY!**  
See the SAFETY GUIDELINES section before using these products. Pages 88–90.

# TONG

Custom Application Form



## LOAD INFORMATION:

Describe the material you are planning to lift: \_\_\_\_\_

### Tong Type Needed:

- Supporting** (Designed to lift crates, boxes, containers, & other square/rectangular shaped materials)
- Indentation** (Designed to lift ingots, boxes, bales, and other straight sided materials)

### Supporting/Indentation Tong Load Dimensions:

Min (inches) Width \_\_\_\_\_ Length \_\_\_\_\_ Height \_\_\_\_\_ Weight \_\_\_\_\_

Max (inches) Width \_\_\_\_\_ Length \_\_\_\_\_ Height \_\_\_\_\_ Weight \_\_\_\_\_

Desired Tong Lift Point:  Width Side  Length Side

Product Positioning Prior Lift:  Flat Surface  Rack  Other (specify): \_\_\_\_\_

Product Positioning Post Lift:  Flat Surface  Rack  Other (specify): \_\_\_\_\_

Does Lifter Require Protective Lining To Prevent Damage To The Load:  Yes  No

Is A Latch Required (Used to assist with hands-free operation): Yes  No

Is An Auto-Latch Required (Used to assist with hands-free operation):  Yes  No

Is The Load Hot:  Yes  No

If Yes: Max Temp: \_\_\_\_\_ Required Lifter/Load Contact Time : \_\_\_\_\_ Min Time Between Lifts \_\_\_\_\_

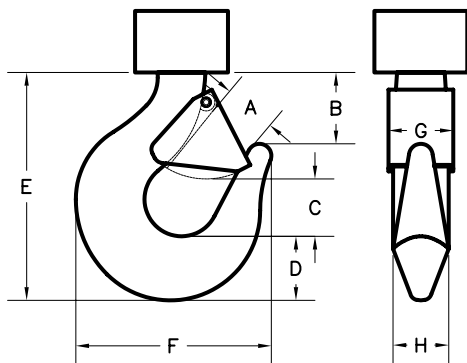
## CRANE SPECIFICATIONS:

Distance Between Top Of The Load To The Crane Hook High Position:

Crane Classification(s):  A  B  C  D  E  F

### CRANE HOOK SPECIFICATIONS (Inches):

A: \_\_\_\_\_ B: \_\_\_\_\_ C: \_\_\_\_\_ D: \_\_\_\_\_ E: \_\_\_\_\_ F: \_\_\_\_\_ G: \_\_\_\_\_ H: \_\_\_\_\_



Please provide pertinent application information not supplied above (extreme product or operating temperature, extreme environmental conditions such as temperature or moisture, space or headroom restrictions, additional specifications):

---

---

---

---